

DEPARTMENT OF THE ARMY SUPPLY CENTER

INSTALLATION OF TIEDOWN KIT AND FABRICATION OF DUNNAGE FOR INSTALLATION OF SHELTERS, ELECTRICAL EQUIPMENT S-144, S-250, S-318 ON TRUCK 1-1/4 TON M-880 SERIES (NSN 5410-01-026-4708)

Headquarters, Department of the Army, Washington, D.C.

23 February 1978

1. Purpose. This bulletin provides information for the installation of Shelter Tiedown Kit (NSN 5410-01-026-4708) and information for the fabrication of dunnage (wooden platform). It also provides installation instructions for shelters, Electrical Equipment S-144, S-250, and S-318 on Truck 1 1/4 Ton M-880 Series.

2. Information. Information for the required items and materials is as follows:

a. Dunnage Materials.

(1) *Lumber and nails for S418.*

- 2 each 2"x8"x97 1/2" plank (modified)
- 3 each 2" x 8" x 50 3/4" cross cleat
- 2 each 2" x 2" x 72" cleat
- AR nails, common 10d, 3" long.

(2) *Lumber and nails for S-250.*

- 2 each 2"x8"x97 1/2" plank (modified)
- 2 each 2" x 8" x 49 1/4" cross tie
- 2 each 2" x 8" x 49 1/4" cross cleat (modified)
- 2 each 2" x 2" x 72" cleat
- AR nails, common 10d, 3" long.

(3) *Lumber and nails for S-144.*

- 2 each 2"x8"x97 1/2" plank (modified)
- 4 each 2" x 8" x 50 3/4" cross cleat
- 2 each 2" x 2" x 72" cleat
- AR nails, common 10d, 3" long.

b. Tiedown Kit Items and Materials.

- (1) Tiedown kit (NSN 5410-01-026-4708).
- (2) Paint, forest green P213 (MIL-E-52798A).

c. Tools Required.

- (1) Metal drilling equipment (up to 7/8" capacity).
- (2) Socket and wrench set (up to 3/4" bolt capacity).
- (3) Tool Kit, Electronic Equipment TK-100/G (NSN 5180-00-805-0079).

3. Procedure. Users will locally procure the necessary lumber and nails for construction of dunnage. Field maintenance organizations requiring the tiedown kit should use their own funds to procure them.

4. Fabrication and Installation Instructions. *a. Fabrication and Installation of Dunnage.*

(1) Cut, assemble, nail and mark the lumber (fig, FO-1, detailed rear view) and install in cargo area of truck.

(2) Figure 1-1 (S-144), figure 1-2 (S-250), figure 1-3 (S-318),

b. Tiedown Kit (NSN 5410-01-026-4708) Installation Instructions.

(1) *Front tiedowns.*

- (a) Install spacer (19) in stake socket.
- (b) Insert 3/4-inch bolt (10, fig. FO-1, detail B). It may be necessary to file the bottom hole in the socket for correct positioning of bolt.
- (c) Using the bolt as a guide, spot and mark for drilling of hole on the floor of the cargo area.
- (d) Remove bolt and drill a 7/8-inch diam-

*This publication supersedes SB 11-640, 30 September 1976

hole in the floor of the cargo area. Repeat operation on the opposite side of truck body.

(e) Install channel assembly (1).

(f) Insert two bolts (10) with washers (16) through channel and front spacer, through stake socket and floor of the cargo area.

(g) From the underside of the cargo area, install plate (2), washer (9), and locknut (15). Repeat procedure on opposite side and torque bolts to 60 foot-pound.

(2) Rear tiedown.

(a) Position support (3) as directed in C. figure FO-1. Using the support as a template, drill three 9/16-inch holes and one 7/8-inch hole.

(b) Enlarge existing hole in bottom of stake socket to 7/8 inch.

(c) Position support (3) on opposite side of truck body and repeat (a) and (b) above.

(d) Enlarge 9/16-inch holes on underside of truck chassis as indicated in A. figure FO-1.

(e) Assemble gusset (5) and channel assembly (8), using hardware (13, 14, and 17).

(f) Place spacer (7) in stake socket.

(g) Place support (3) on truck floor.

(h) Install gusset (5) using washers (16), if necessary, as indicated in detail A.

(i) Place plate assembly (4) on underside of floor. Align holes and install bolt (10), washer (16), and lockwasher (18). Do not tighten at this time.

(j) Install two screws (12) (outer) and secure with washer (17) and nut (14).

(k) Install brace (6) on underside of truck chassis. Align holes and secure with bolts (12 and 11) and hardware.

(l) Torque bolt (10) to 60 foot-pound.

(m) Repeat operation on opposite side.

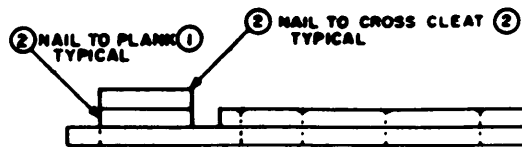
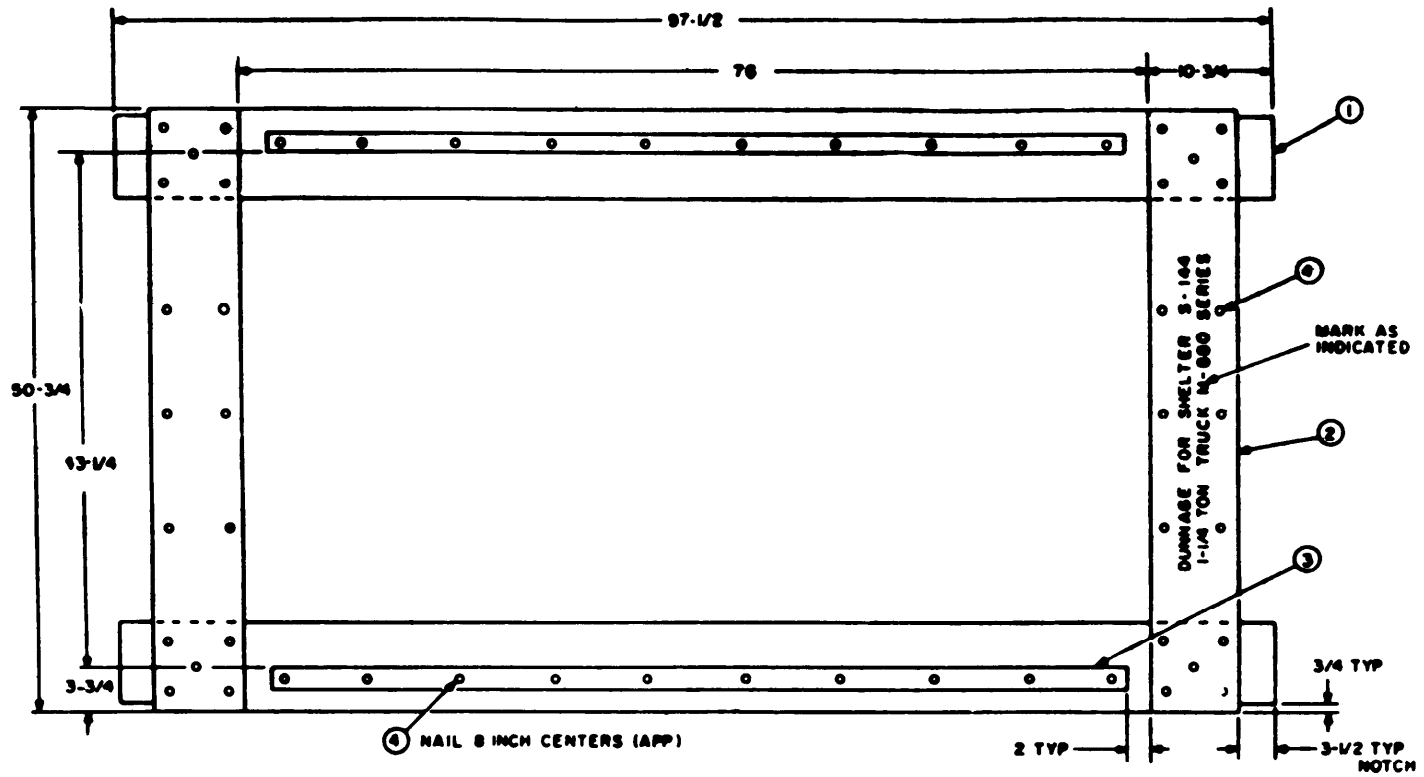
(n) Check to see that all nuts, bolts, and fastening devices are secure.

(o) Remove all burrs and sharp edges and coat all bare metal with a suitable primer and finish with forest green paint P213 per MIL-E-52798A.

5. Reporting of Errors. The reporting of errors, omissions, and recommendations for improving this publication by the individual user is encouraged. Reports should be submitted on DA Form 2028 (Recommended Changes to Publications and Blank Forms) and forwarded direct to Commander, US Army Electronics Command, ATTN: DRSEL-MA-Q, Fort Monmouth, NJ 07703.

Table 1-1. Tiedown kit components

Item No.	Description	Qty	Part number	National stock number
1	Channel assembly	1	SC-D-866002	
2	Plate	2	SC-C-866005	
3	Support	1	SC-D-866008	
4	Plate assembly	2	SC-D-866009	
5	Gusset	2	SC-D-866010	
6	Brace	2	SC-D-866011	
7	Spacer (rear)	2	SC-C-866012	
8	Channel assembly	2	SC-D-866013	
9	Washer, flat	2	SC-B-866030	
10	Bolt, machine 3/4-10 x 2 1/2 lg	4	MS35355-221	5306-00-550-3694
11	Screw, hex hd 1/2-13 x 1-1/2 lg	2	MS90725-113	5305-00-042-6417
12	Screw, hex hd 1/2-13 x 2 lg	6	MS90725-115	5305-00-071-1769
13	Screw, hex hd 1/2-13 x 4-1/4 lg	4	MS90725-124	5405-00-071-1777
14	Nut, hex self-locking 1/2-13	12	MS51922-33	5310-00-225-6993
15	Nut, hex self-locking 3/4-10	2	MS51922-57	5310-00-067-6356
16	Washer, flat 3/4	AR	MS27183-23	5310-00-809-8533
17	Washer, flat 1/2	24	MS27183-18	5310-00-809-5998
18	Washer, lock 3/4	2	MS35336-13	5310-00-010-3326
19	Spacer (front)	2		

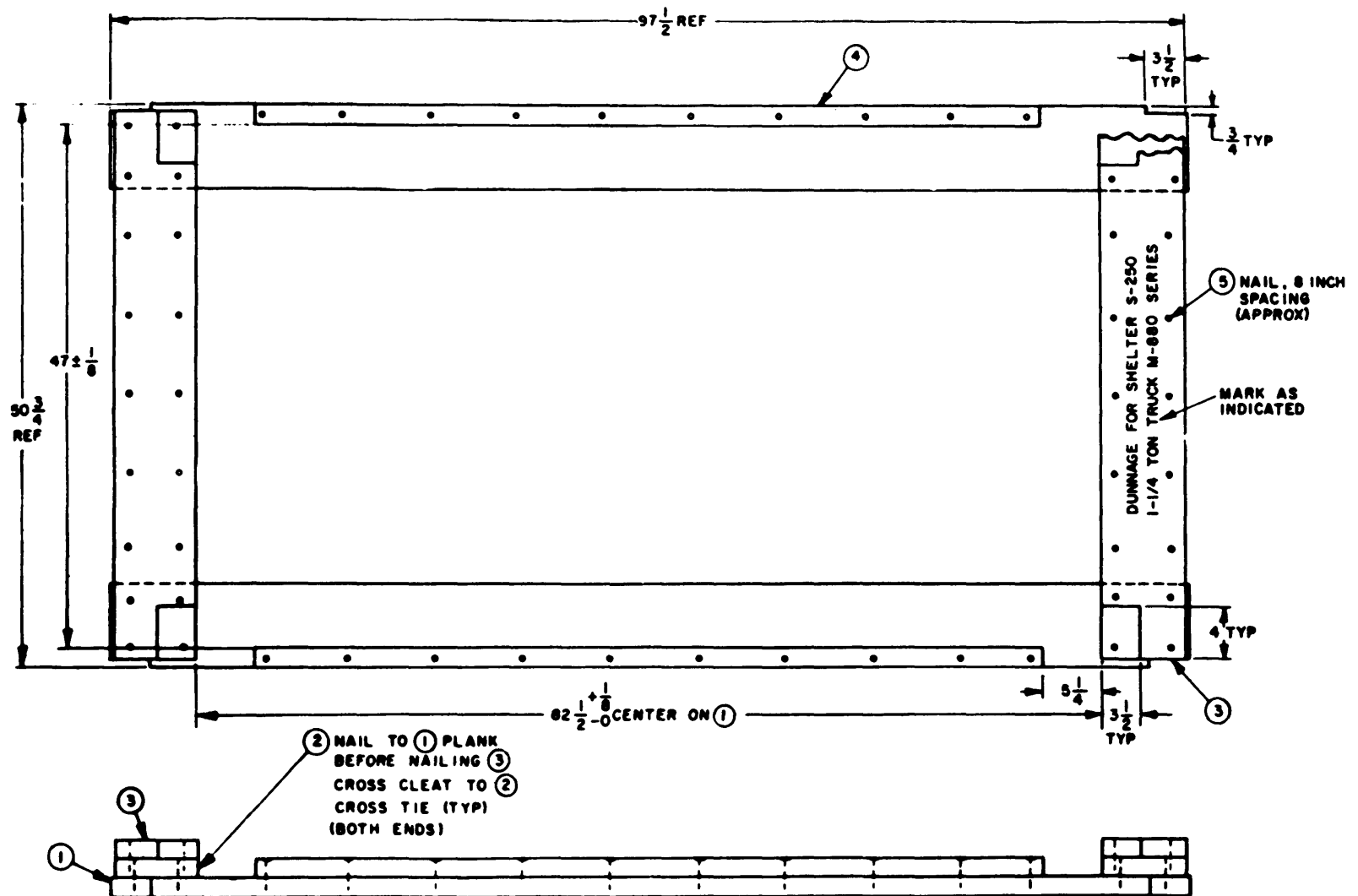


NOTE:
ALL DIMENSIONS ARE IN INCHES.

FIG NO.	QTY REQD	NOMENCLATURE OR DESCRIPTION
1	2	PLANK 2X8X97-1/2 L6 (MOD)
2	4	CROSS CLEAT 2X8X 50-3/4 L6
3	2	CLEAT 2X2 X 72 L6
4	AR	NAILS, COMMON 10d, 3L6

EL2U1001

FIGURE I-1. DUNNAGE FOR MOUNTING SHELTER S-144 IN SERIES 880 TRUCK 1 1/4 TON.

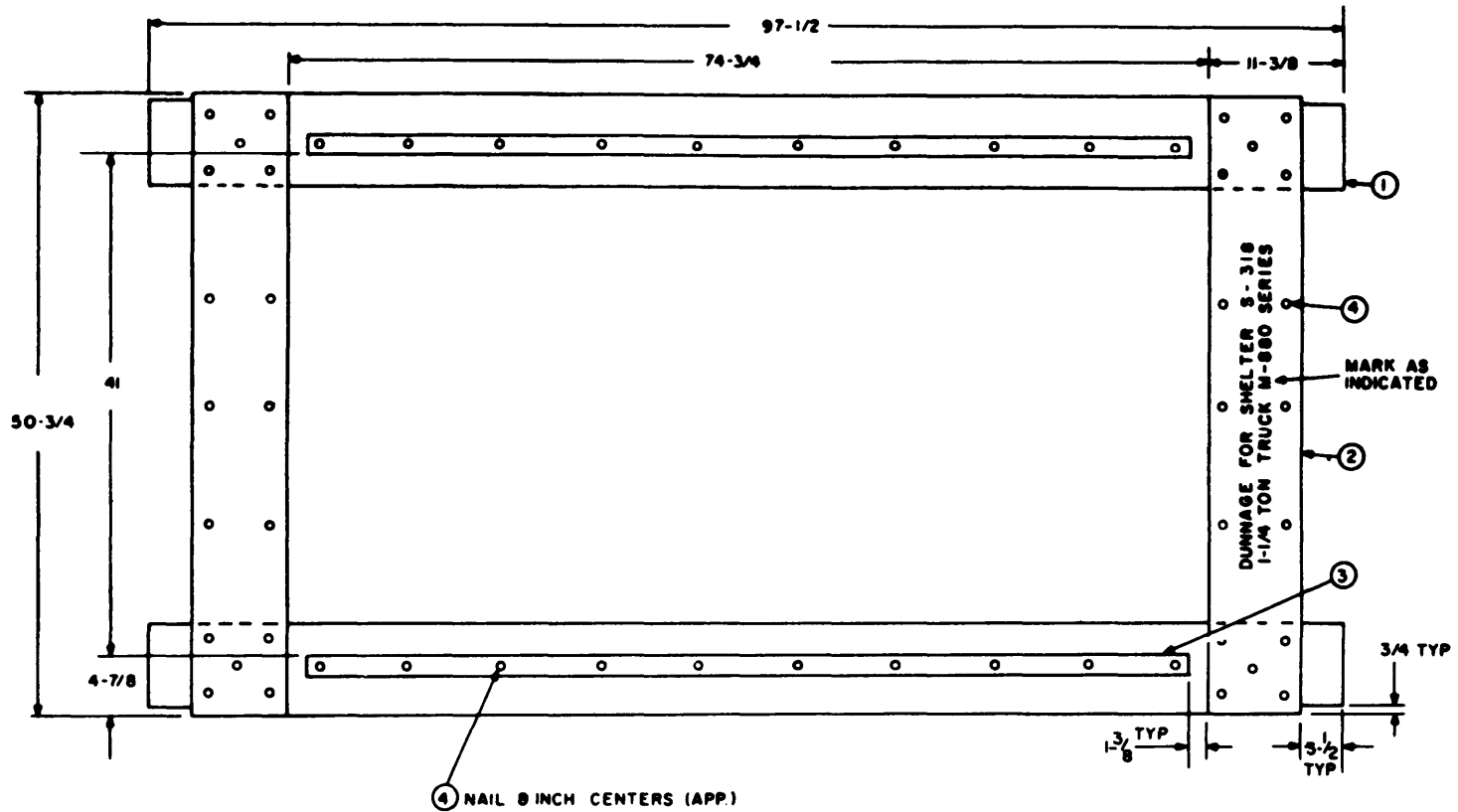


NOTE:
ALL DIMENSIONS ARE IN INCHES.

FIND NO	QTY REQD	DESCRIPTION
1	2	PLANK 2 X 8 X 97-1/2 LG (MOD)
2	2	CROSS TIE 2 X 8 X 49-1/4 LG
3	2	CROSS CLEAT 2 X 8 X 49-1/4 LG (MOD)
4	2	CLEAT 2 X 2 X 72 LG
5	AR	NAILS, COMMON 10d 3 LG

EL2U1002

FIGURE I-2. DUNNAGE FOR MOUNTING SHELTER S-250 IN SERIES 880 TRUCK 1 1/4 TON.



② NAIL TO PLANK ①
TYPICAL

NOTE
ALL DIMENSIONS ARE IN INCHES.

FIND NO	QTY REQD	NOMENCLATURE OR DESCRIPTION
1	2	PLANK 2X8X97-1/2LG (MOD)
2	3	CROSS CLEAT 2X8X50-3/4LG
3	2	CLEAT 2X2X72 LG
4	AR	NAILS, COMMON 10d, 3LG

EL2UR003

FIGURE 1-3. DUNNAGE FOR MOUNTING SHELTER S-318 IN SERIES 880 TRUCK 1¹/₄ TON.

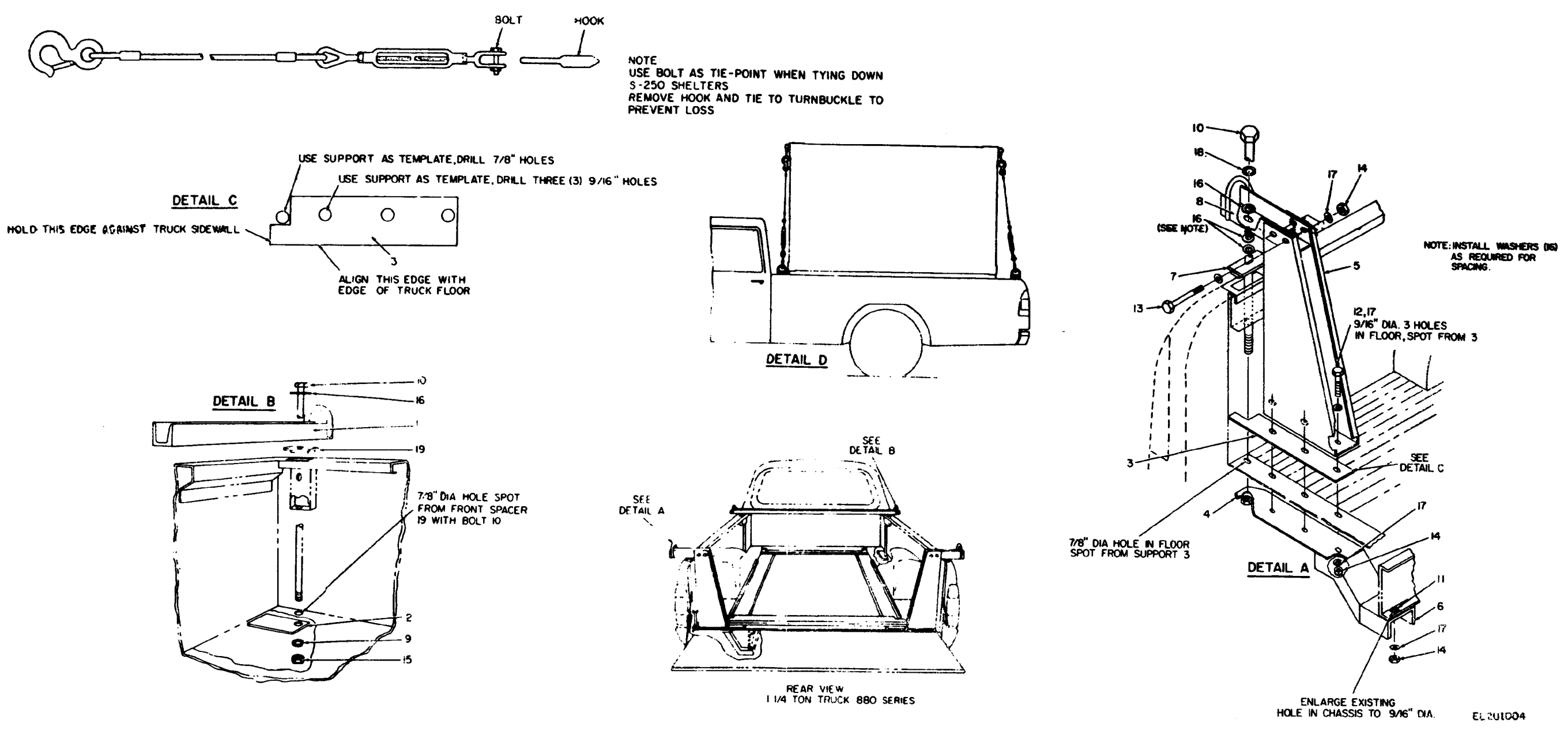


FIGURE FO-1. INSTALLATION OF DUNNAGE AND TIE DOWN KIT IN 880 SERIES TRUCKS.

By Order of the Secretary of the Army:

BERNARD W. ROGERS
General, United States Army
Chief of Staff

Official:

J. C. PENNINGTON
Brigadier General, United States
The Adjutant General

Distribution:

Active Army:

USAINSCOM (2)	Units org under fol TOE:-1 ea.
COE (1)	1-207 11-97
TSG (1)	1-258 11-98
USAARENBD (1)	5-112 11-117
DARCOM (1)	6-200 11-127
TECOM(2)	6-201 11-225
USACC (4)	6-365 11-227
USACC-EUR (10)	6-366 11-500 (AA-AC)
TRADOC (2)	6-405 17
OS Maj Cored (4)	6-406 19-57
7th Sig Cored (5)	6-407 29-41
MDW (1)	6-425 29-85
Armies (2)	6-426 29-86
Corps (2)	6-427 29-87
HISA (Ft Monmouth) (33)	6-455 29-134
Fort Gillem (10)	6-456 29-136
Fort Gordon (10)	6-457 32-56
Fort Huachuca (10)	6-467 32-57
Fort Carson (5)	6-525 32-77
Ft Richardson (ECOM Ofc) (2)	6-526 32-78
Svc College, (1)	6-555 32-500
USASIGS (5)	6-526 44-235
USAICS (3)	6-575 44-237
USAADS (2)	6-576 44-368
USAFAS (2)	6-577 54-12
USAARMS (2)	6-615 57
USAIS (2)	6-616
USAES (2)	6-617
AD (1) except	7
SAAD (M)	11-15
LBAD (14)	11-16
TOAD (14)	11-17
SHAD (3)	11-35
USA Dep (1)	11-37
Sig Sec USA Dep (1)	11-39
MAAG(1)	11-85
USARMIS (1)	11-86
USAERDAA (1)	11-87
USAERDAW (1)	11-95

ARNG & USAR: None.

For explanation of abbreviations used, see AR 310-50.

